

**SECTION 45-4 REVIEW**

# INTEGUMENTARY SYSTEM

**VOCABULARY REVIEW** Define the following terms.

- 1. exocrine gland \_\_\_\_\_  
\_\_\_\_\_
- 2. melanin \_\_\_\_\_  
\_\_\_\_\_
- 3. sebum \_\_\_\_\_  
\_\_\_\_\_
- 4. keratin \_\_\_\_\_  
\_\_\_\_\_
- 5. sweat gland \_\_\_\_\_  
\_\_\_\_\_

**MULTIPLE CHOICE** Write the correct letter in the blank.

- \_\_\_\_\_ 1. The dermis
  - a. covers the epidermis.
  - b. produces melanin.
  - c. contains nervous tissue and blood vessels.
  - d. consists mostly of dead cells.
- \_\_\_\_\_ 2. Which of the following is secreted by oil glands in the skin?
  - a. melanin
  - b. sebum
  - c. keratin
  - d. sweat
- \_\_\_\_\_ 3. Which of the following is *not* a function of the layer of fat cells beneath the dermis?
  - a. produces oil
  - b. provides an energy reserve
  - c. absorbs shock
  - d. insulates the body
- \_\_\_\_\_ 4. Hair and nails are composed primarily of
  - a. sebum.
  - b. keratin.
  - c. glands.
  - d. All of the above
- \_\_\_\_\_ 5. Sweat glands
  - a. secrete sebum into the bloodstream.
  - b. stimulate hair follicles.
  - c. help maintain a steady body temperature.
  - d. insulate the body.

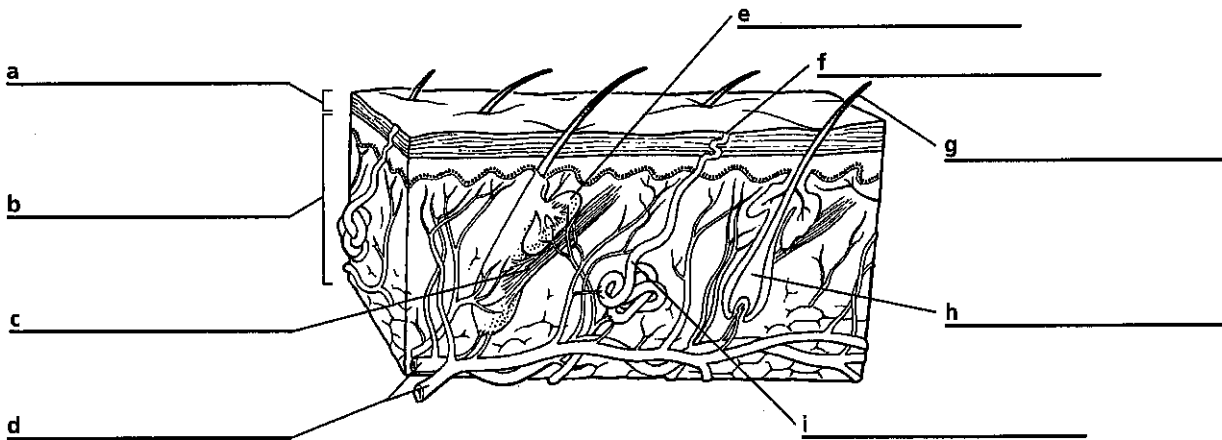
Copyright © by Holt, Rinehart and Winston. All rights reserved.

**SHORT ANSWER** Answer the questions in the space provided.

1. Describe the functions of the skin. \_\_\_\_\_  
\_\_\_\_\_
2. How does exposure to ultraviolet light influence melanin production in the skin? \_\_\_\_\_  
\_\_\_\_\_
3. Describe the functions of the epidermis. \_\_\_\_\_  
\_\_\_\_\_
4. How are hair and nails similar in structure? \_\_\_\_\_  
\_\_\_\_\_
5. **Critical Thinking** What causes freckles and pigmented moles? \_\_\_\_\_  
\_\_\_\_\_

**STRUCTURES AND FUNCTIONS** Use the figure below to answer the following questions.

1. Label each part of the figure in the spaces provided.



2. Which structures contain keratin? \_\_\_\_\_  
\_\_\_\_\_
3. Explain how the dermis enables the body to interact with the external environment.  
\_\_\_\_\_  
\_\_\_\_\_