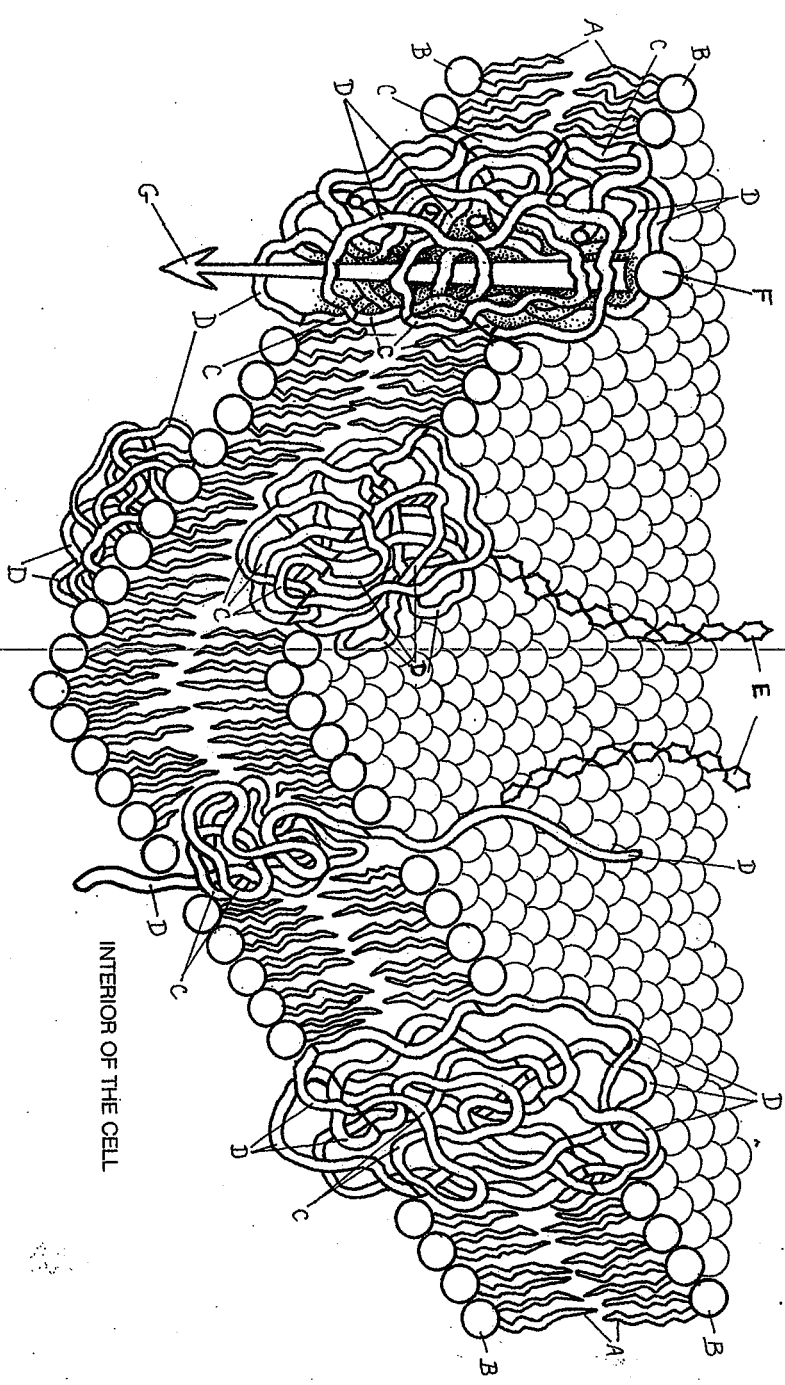


# THE FLUID MOSAIC MODEL.

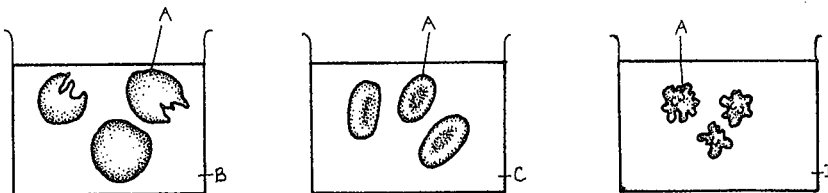
PHOSPHOLIPID BILAYER\*  
NONPOLAR (HYDROPHOBIC)  
PORTION,  
POLAR (HYDROPHILIC)  
PORTION.

PROTEIN MOLECULE\*  
HYDROPHOBIC PORTION,  
HYDROPHILIC PORTION,  
GLYCOCALYX\*  
CARBOHYDRATE  
ION/SMALL POLAR MOLECULE  
DIFFUSION.

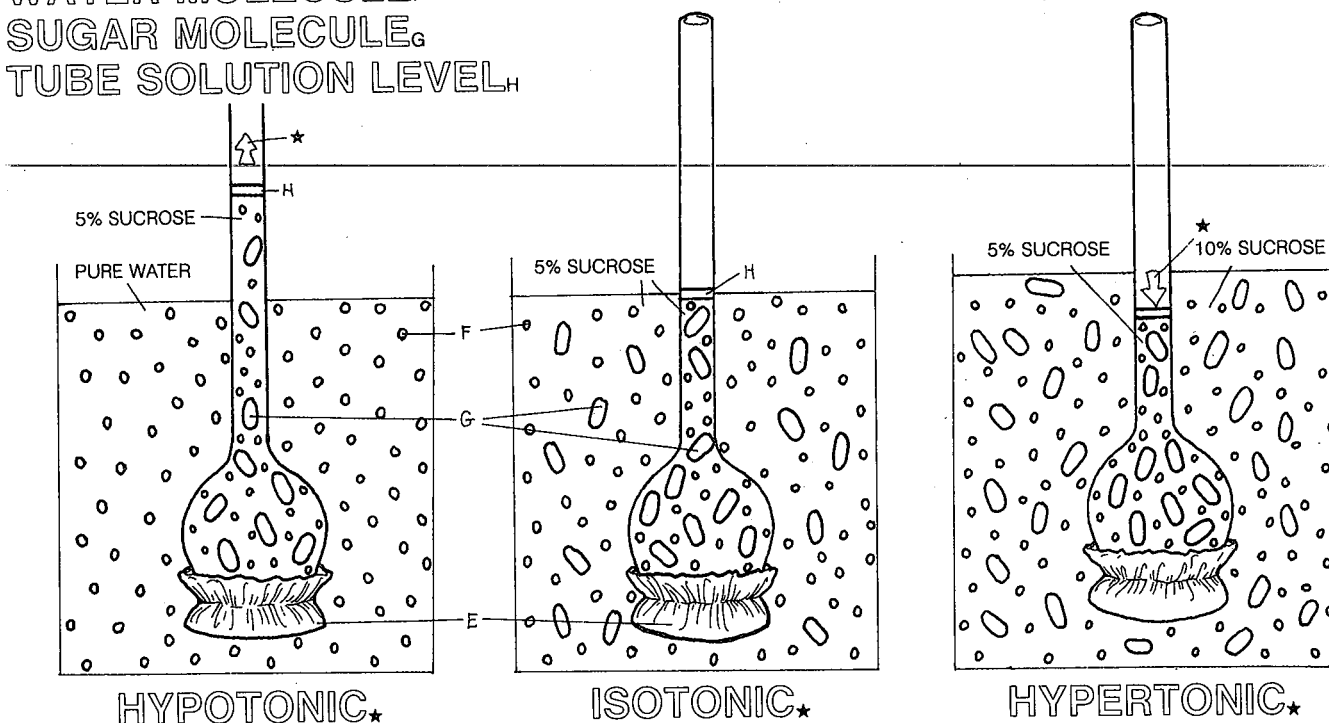


# OSMOSIS.

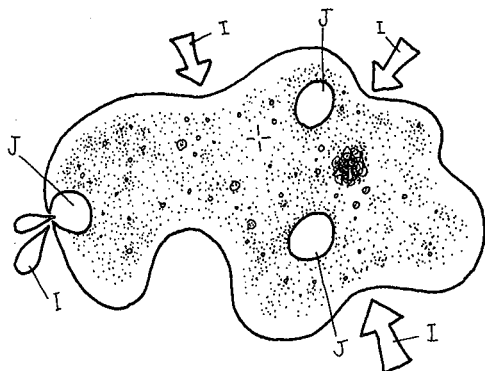
ERYTHROCYTE,  
PURE WATER,  
0.85% SALT SOLUTION,  
2% SALT SOLUTION.



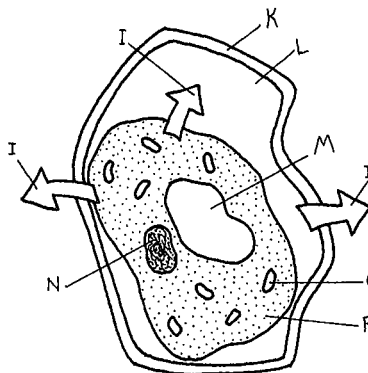
OSMOMETER\*  
SELECTIVELY PERMEABLE  
MEMBRANE<sub>E</sub>  
WATER MOLECULE<sub>F</sub>  
SUGAR MOLECULE<sub>G</sub>  
TUBE SOLUTION LEVEL<sub>H</sub>



AMOEBA\*  
WATER,  
CONTRACTILE VACUOLE,



WILTING PLANT CELL\*  
CELL WALL<sub>K</sub>  
AIR SPACE<sub>L</sub>  
SHRUNKEN VACUOLE<sub>M</sub>  
NUCLEUS<sub>N</sub>  
CHLOROPLAST<sub>O</sub>  
HYALOPLASM<sub>P</sub>



## Color Code for Fluid Mosaic Model and Osmosis

### ***ALL diagrams***

ANY Name with a star or dot – Black

Nonpolar (Hydrophobic) Portion – Dark Red

Polar (Hydrophilic) Portion – Dark blue

(Protein Molecule) Hydrophobic Portion - Orange

(Protein Molecule) Hydrophilic Portion - Purple

Carbohydrate – Green

Ion/Small Polar Molecule – Yellow

Diffusion – Pink

### ***Osmosis***

---

Erythrocyte (fancy name for a blood cell) – Pink

Pure Water – Blue

0.85% Salt Solution – light blue

2 % Salt Solution - Green

Selectively Permeable Membrane – Yellow

Water Molecule – Blue

Sugar Molecule – Dark Green

Tube Solution Level – Orange

Amoeba & Wilting Plant Cell – select your own  
colors

**NOT EVERYTHING IS LABELED!** THE COLOR DIAGRAM RESOURCE ASSUMES THAT ONCE YOU COLOR ONE STRUCTURE, YOU WILL CONTINUE TO USE THAT COLOR FOR ALL OTHER IDENTICAL STRUCTURES. PLEASE DO SO.

Anything labeled, but not on this color code sheet, feel free to pick whichever color you like.